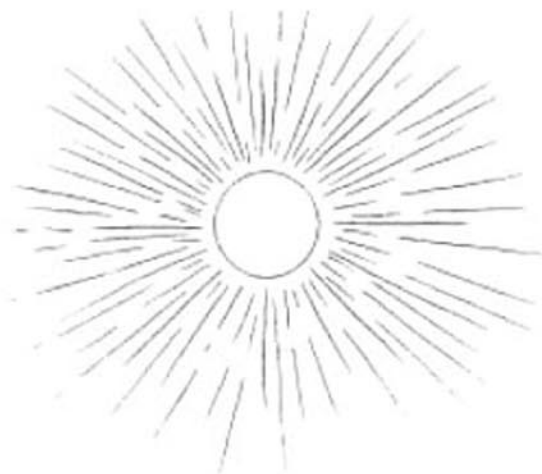
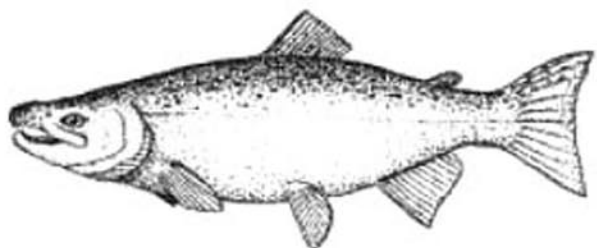
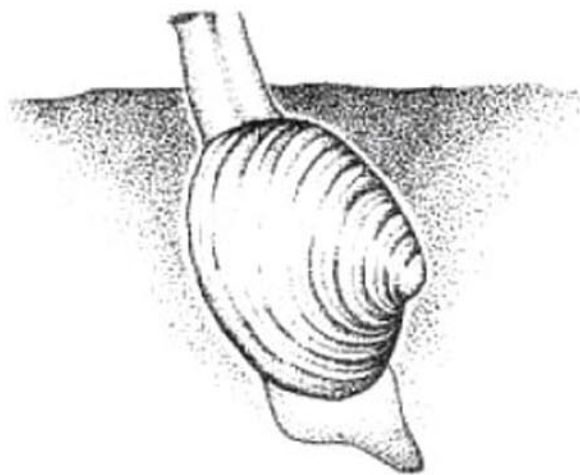
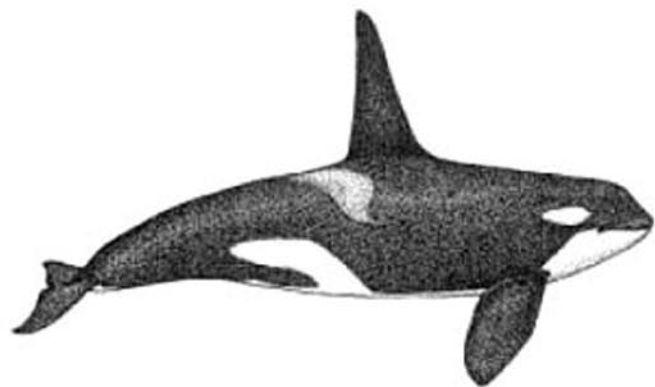


Sea Otter Food Chain Cards



Sea Otter Food Chain Cards

Orca

Trait: marine mammal

Feeds on: seals, sea lions, sea otters, salmon

Is eaten by: scavengers and decomposers

Sea Otter

Trait: marine mammal with a thick fur coat

Feeds on: sea urchins, clams, mussels, sea stars

Is eaten by: possibly orcas

Kelp

Trait: producer

Feeds on: makes its own by photosynthesis

Is eaten by: snails, sea urchins, people

Clam

Trait: bivalve invertebrate - mollusc

Feeds on: filter detritus, algae, small crustaceans, insect larvae from the water

Is eaten by: snails, sea stars, diving ducks, shorebirds, sea otters, humans

Sun

Trait: dwarf yellow star and a dense ball of gases and dust

Occurrences: The sun is located in the center of our solar system, 93 million miles from Earth

Values: plants and other producers capture the energy in sunlight and, through photosynthesis, store it in the form of sugar. They use this "stored sunlight energy" to grow and reproduce

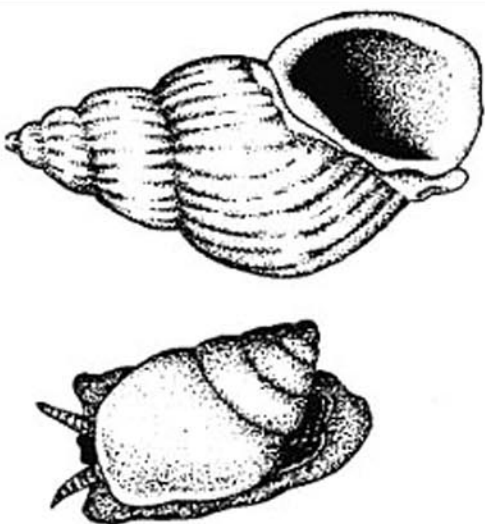
Salmon

Trait: vertebrate

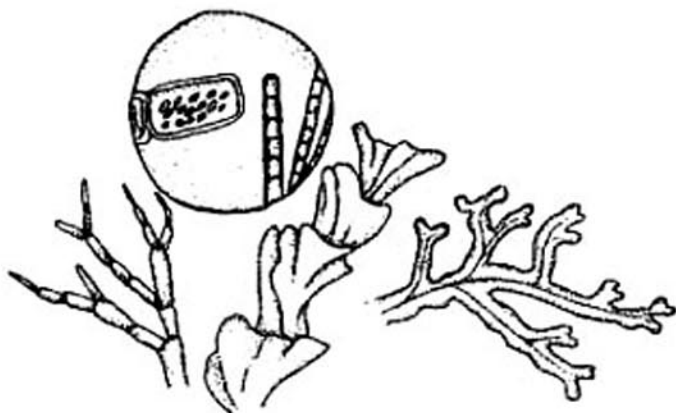
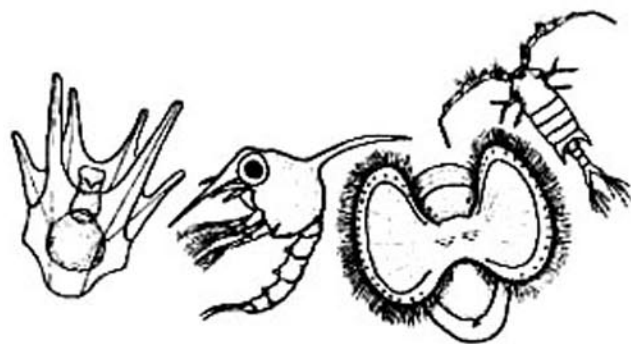
Feeds on: insect larvae, zooplankton

Is eaten by: larger fish, seals, orcas, humans

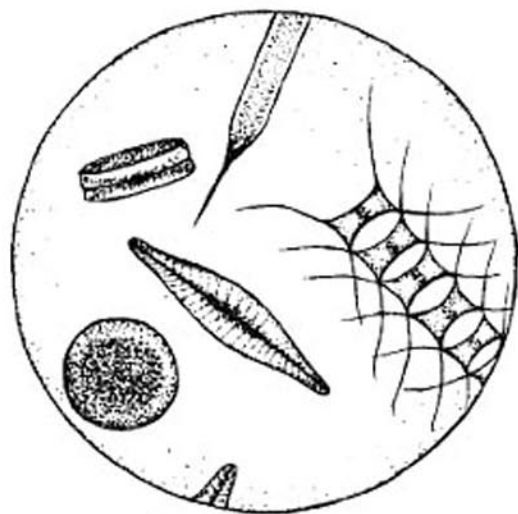
Sea Otter Food Chain Cards



Snails



Green Algae



Diatoms

Sea Otter Food Chain Cards

Sea Star

Trait: predator: invertebrate - echinoderm

Feeds on: barnacles, clams, snails, mussels

Is eaten by: sunflower stars, king crabs, sea otters

Sea Urchin

Trait: invertebrate - echinoderm

Feeds on: kelp, microalgae, coralline algae, small barnacles

Is eaten by: sea otters, sunflower stars, sea anemones, crabs, tidepool sculpins, gulls, crows and ravens

Zooplankton

Trait: microscopic animals and larvae that drift on ocean currents

Feeds on: phytoplankton like diatoms

Is eaten by: filter feeders like clams, crabs, baleen whales

Snails

Trait: invertebrate - mollusc

Feeds on: seaweeds, algae, mussels, barnacles

Is eaten by: crustaceans, fish, birds, mammals

Diatoms

Trait: microscopic, single-celled producer

Feeds on: makes own food by photosynthesis

Is eaten by: small crustaceans, larvae of invertebrates (zooplankton), fish

Green Algae

Trait: producer

Feeds on: makes own food through photosynthesis

Is eaten by: small crustaceans, some molluscs, aquatic invertebrates, fish, geese, ducks